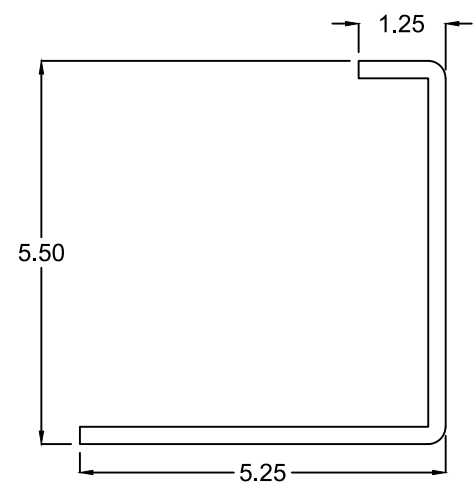
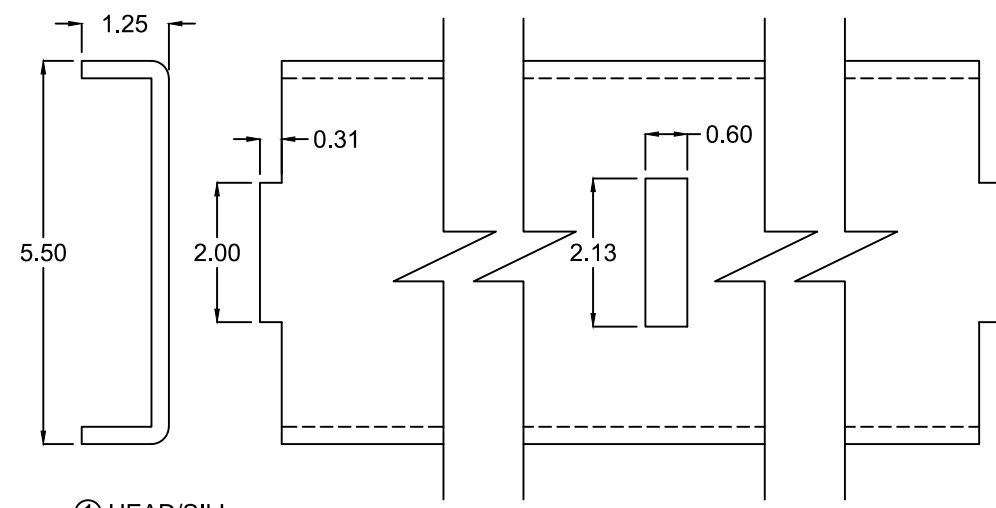


BILL OF MATERIALS

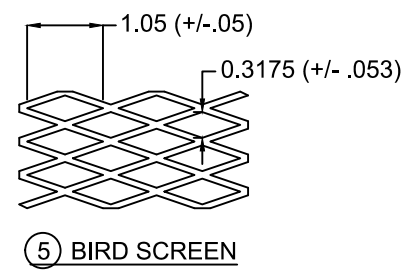
Part #, Description	Material
1. (UE# 1095) Head, Sill	1/4" THK. 3003-H14 ALUMINUM
2. (UE# 1095) Jamb	1/4" THK. 3003-H14 ALUMINUM
3. (UE# 35) Blade	6061-T6 EXTRUDED ALUM. ANGLE
4. (UE# 1095) Blade Brace	1/4" THK. 3003-H14 ALUMINUM
5. (UE# 4896) Bird Screen	18 ga x 1/2" Expanded Steel
6. (UE# 4691) Installation Angle (2X7)	6063-T5 EXTRUDED ALUMINUM ANGLE
7. (UE# 3952) Installation Angle (2X4)	6063-T5 EXTRUDED ALUMINUM ANGLE
8. Wall Extension Angle (4X4x1/4" HRS)	1/4" THK. HRS



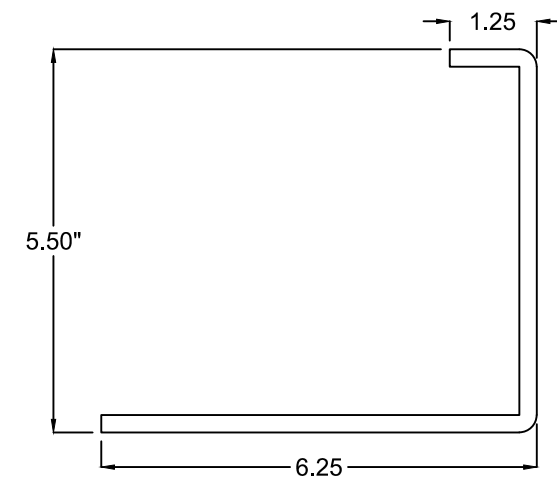
① FLANGED HEAD/SILL



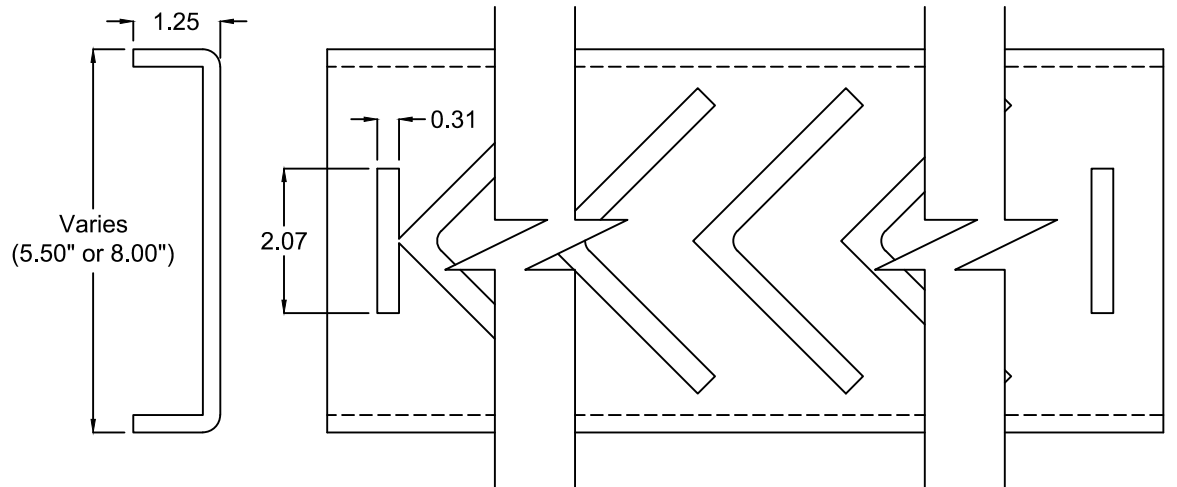
① HEAD/SILL



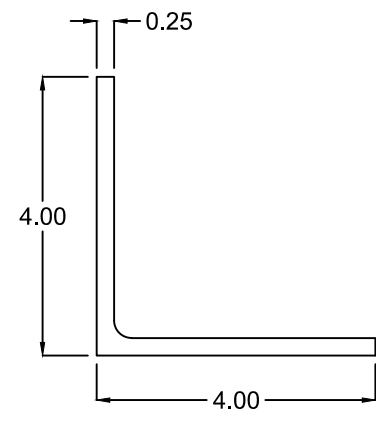
⑤ BIRD SCREEN



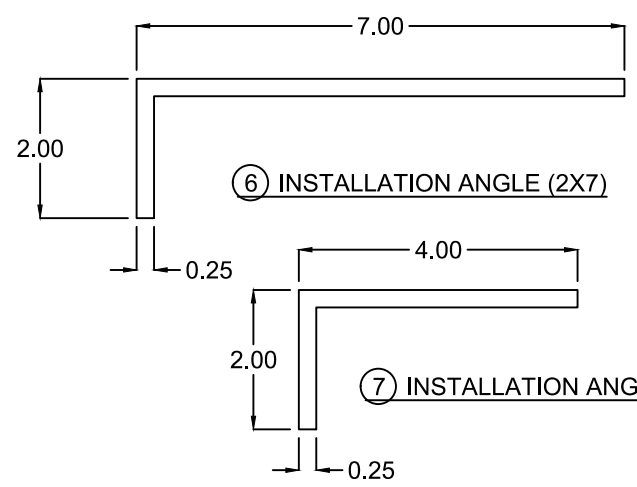
② FLANGED JAMB



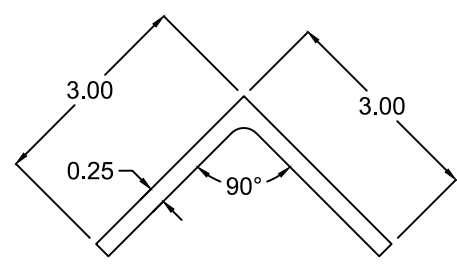
② JAMB



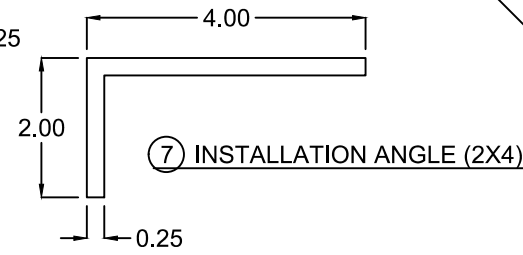
⑧ WALL EXTENSION ANGLE



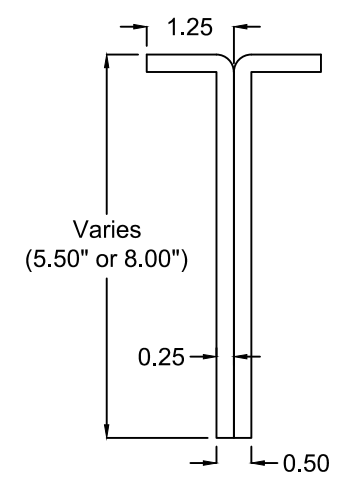
⑥ INSTALLATION ANGLE (2X7)



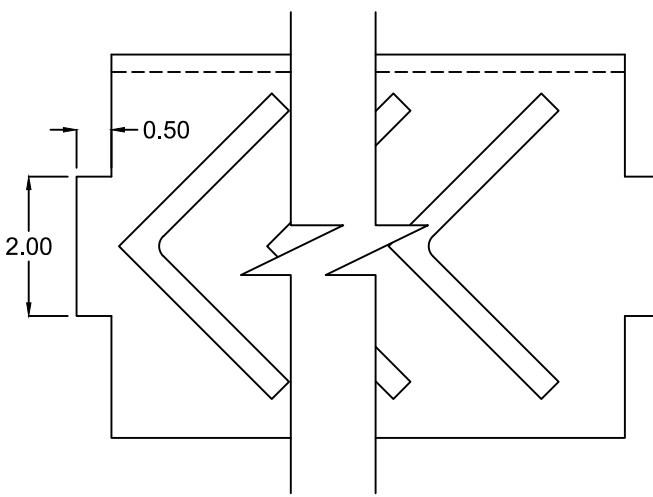
③ BLADE



⑦ INSTALLATION ANGLE (2X4)



④ BLADE BRACE



Notes:

FEMA-5 (FEMA 361, ICC-500, ASTM E330)
(Component Parts)

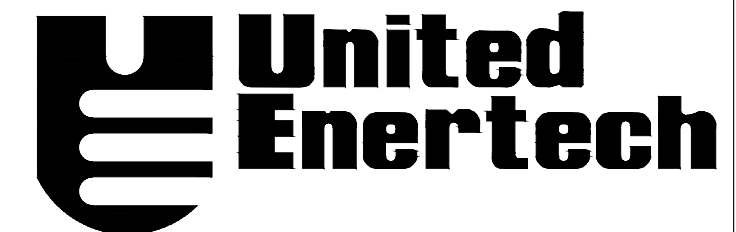
Date: 8-26-20 (rev.6)

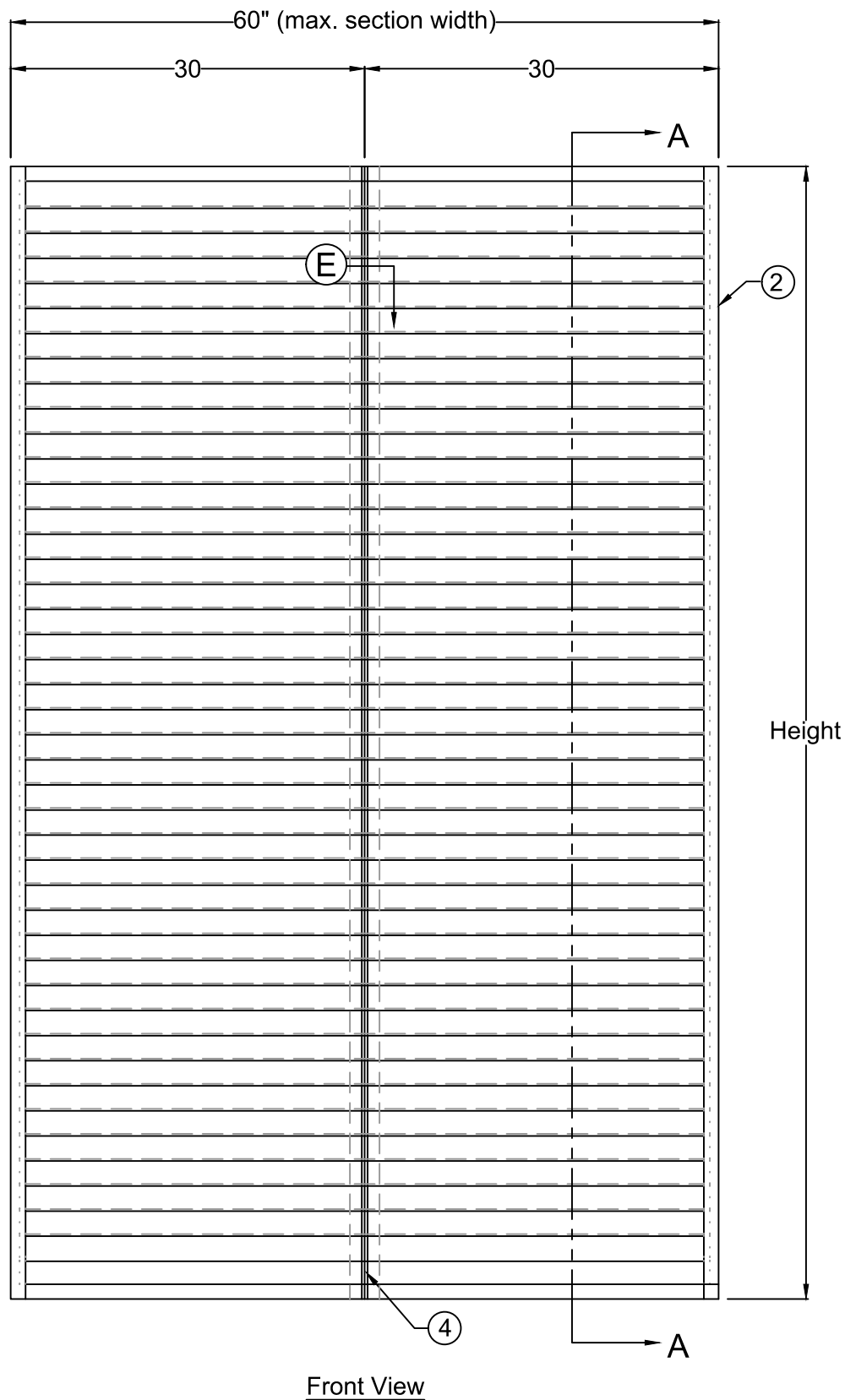
Dwg. FEMA5-0017

Approved By:

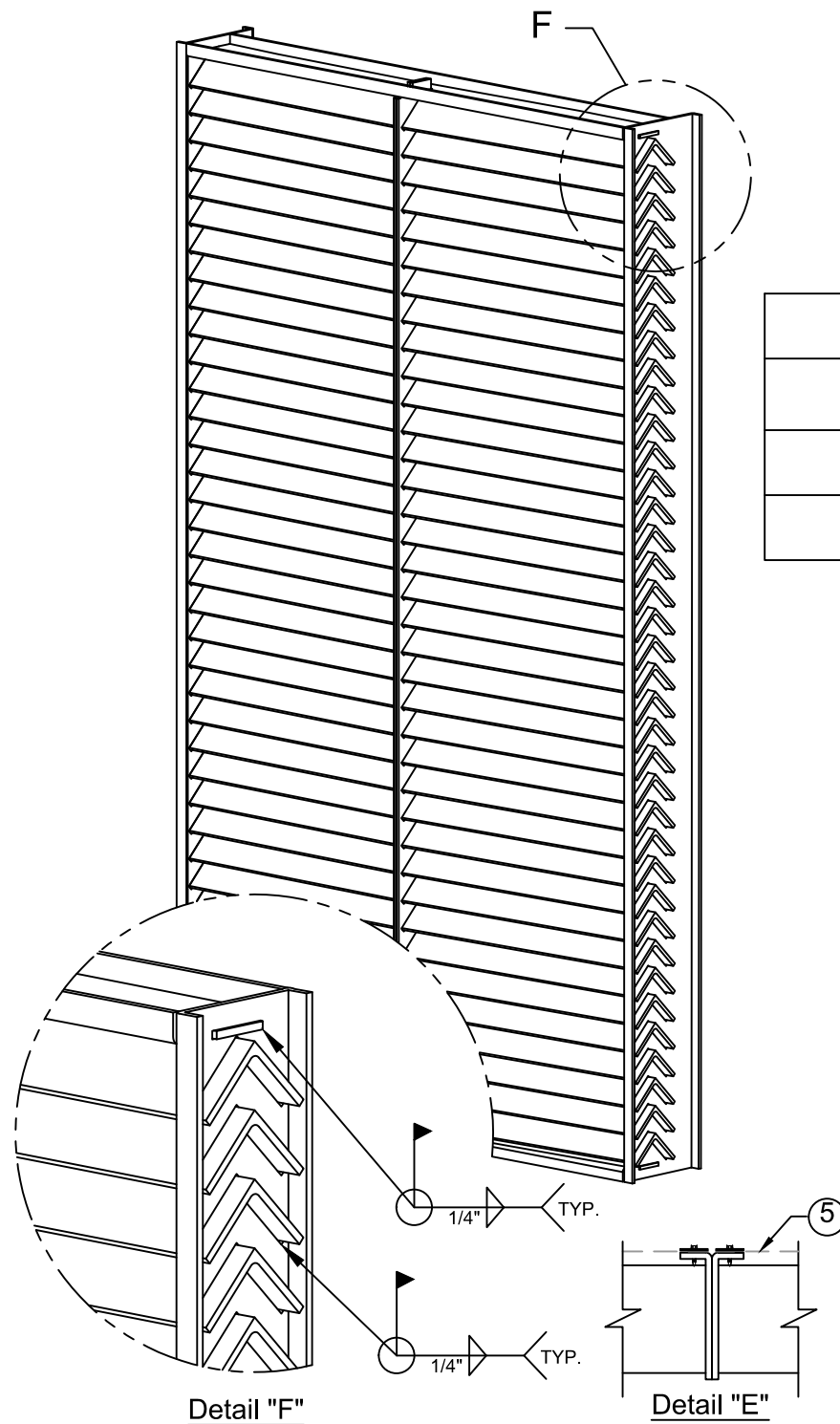
Drawn By: C. Jackson

pg. 1 of 9





Front View



Detail "F"

Detail "E"

FEMA-5 Box Frame sizing criteria			
Jamb Depth	Max. Section Width	Max. Height	*Design wind load (max psf)
5.5"	60"	60"	+/- 300
**8"	60"	96"	+/- 300

Qualifies unlimited multi-section widths (60" max. width panels) x 96" height

*Note: Proof load in ASTM E330 test will be +/- 360 psf

**Box frame units over 60" tall utilize an 8" deep jamb

Notes:

FEMA-5
Box Frame Elevation

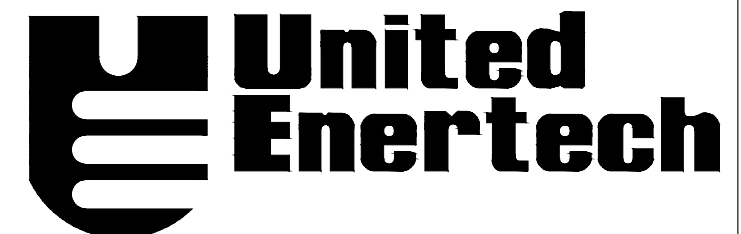
Date: 8-26-20 (rev.6)

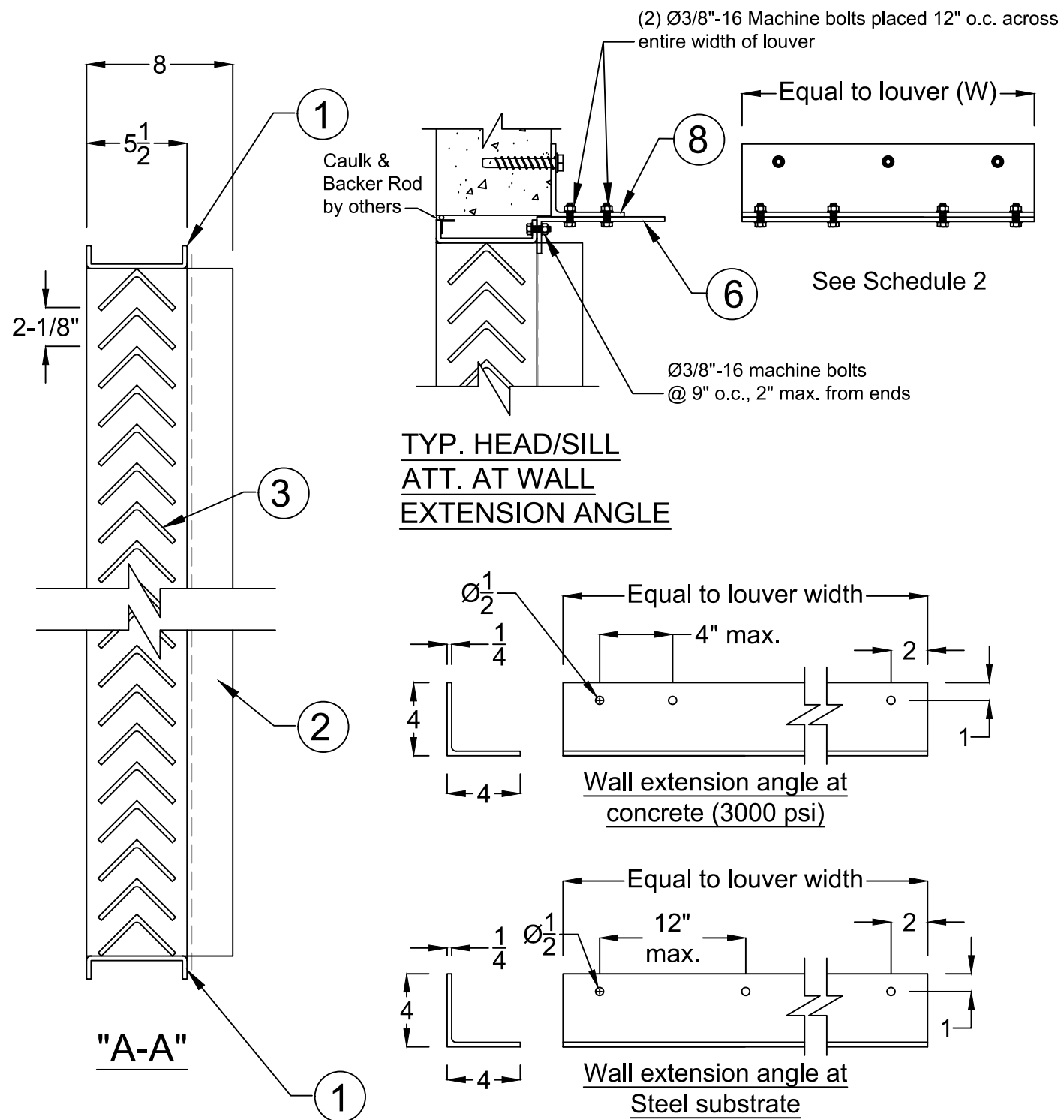
Dwg. FEMA5-0017

Approved By:

Drawn By: C. Jackson

pg. 2 of 9





INSTALLATION SCHEDULE 2						
*Max. PSF	Specification according to substrate (Wall extension angles, Head/Sill)					
	Concrete (min. 3000 PSI)			Steel (1/4" min. thk.) (Fy=36 ksi)		
+/-300	Ø1/2" Simpson Strong-Tie Titen HD Screw Anchor			Ø3/8"-16 Machine Screws		
	Spacing	Min. Embed.	Min. Edge Distance	Spacing	Min. Embed.	Min. Edge Distance
	4" o.c.	4.5"	2.5"	12" o.c.	N/A	1"

All fasteners are placed 3" min. from ends of louver
 *Note: Proof load in ASTM E330 test will be +/- 360 psf

Notes: FEMA-5 (Wall Extension Attachments)

Date: 8-26-20 (rev.6)

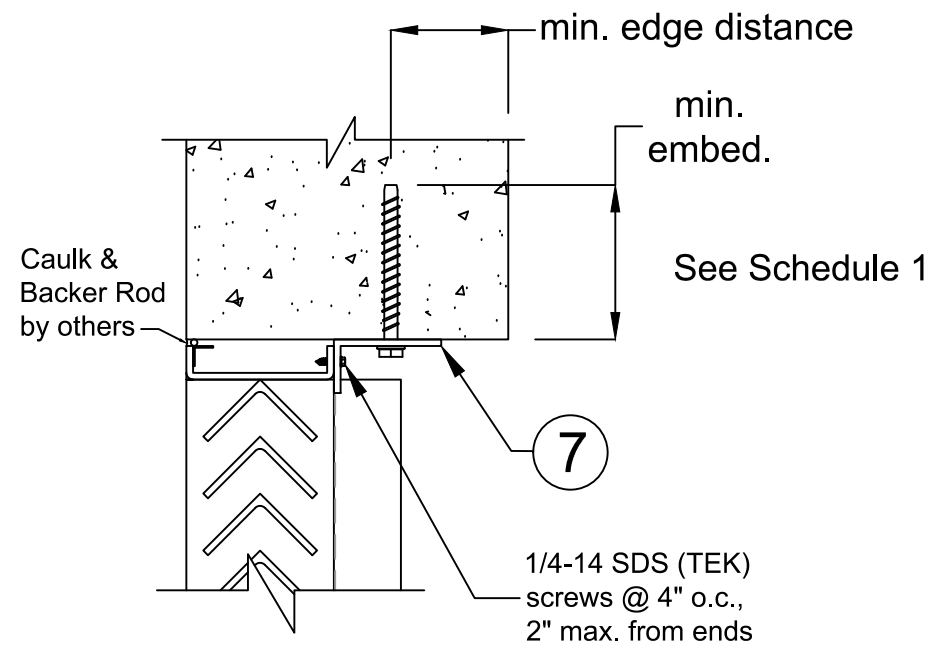
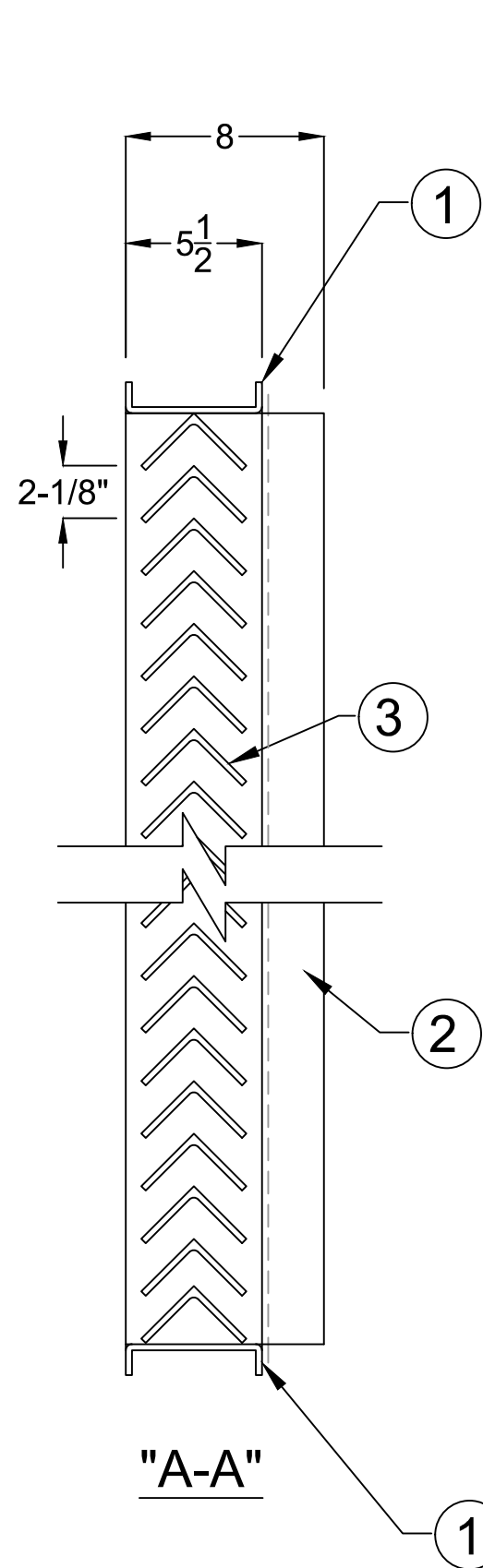
Dwg. FEMA5-0017

Approved By:

Drawn By: C. Jackson

pg. 3 of 9





**TYP. HEAD/SILL
ATT. AT SUBSTRATE**

INSTALLATION SCHEDULE 1									
*Max. PSF	Specification according to substrate (Head/Sill angle attachment)								
	Concrete (min. 3000 PSI)			Steel (10 ga min.) (Fy=36 ksi)			Wood (G=0.55 density)		
+/-300	Ø1/2" Simpson Strong-Tie Titen HD			Ø1/4" Tek Screws			Ø5/16" Lag Screws		
	Spacing	Min. Embed.	Min. Edge Distance	Spacing	Min. Embed.	Min. Edge Distance	Spacing	Min. Embed.	Min. Edge Distance
	4" o.c.	5.75"	4"	3" o.c.	N/A	1"	3" o.c.	2.5"	2"

All fasteners are placed 3" min. from ends of louver

*Note: Proof load in ASTM E330 test will be +/- 360 psf

Notes:

FEMA-5
(Standard Attachments)

Date: 8-26-20 (rev.6)

Dwg. FEMA5-0017

Approved By:

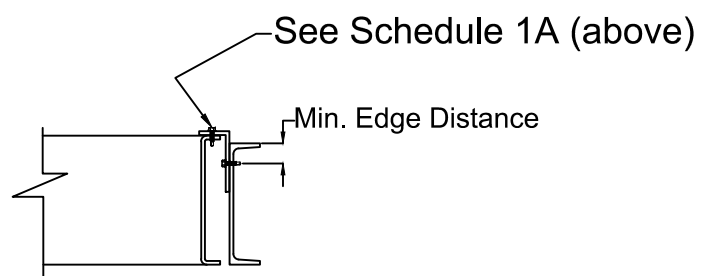
Drawn By: C. Jackson

pg. 4 of 9

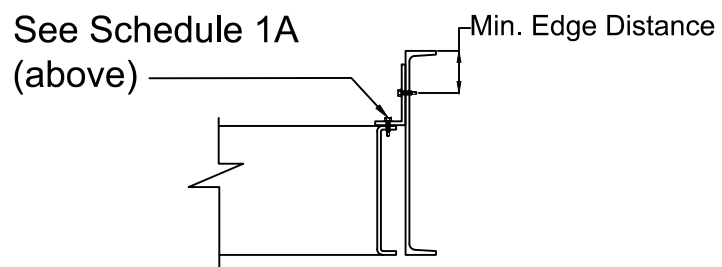


FEMA-5 Jamb Angle installation method

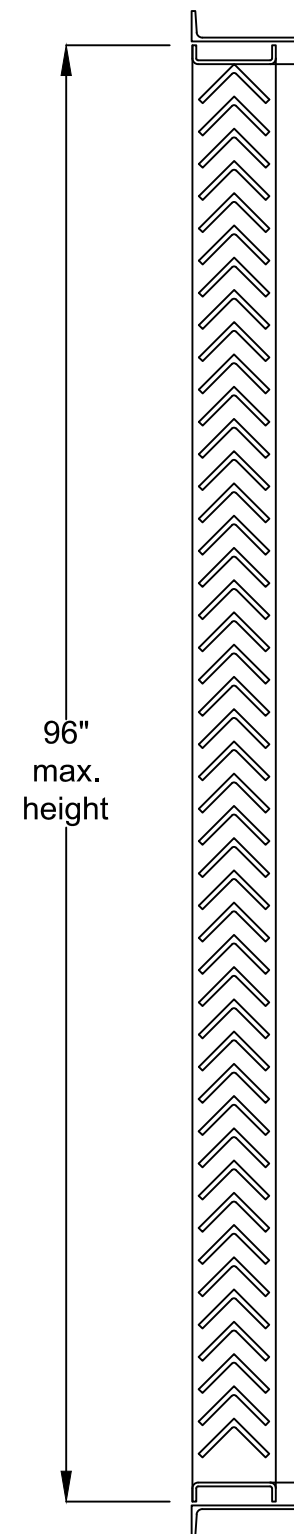
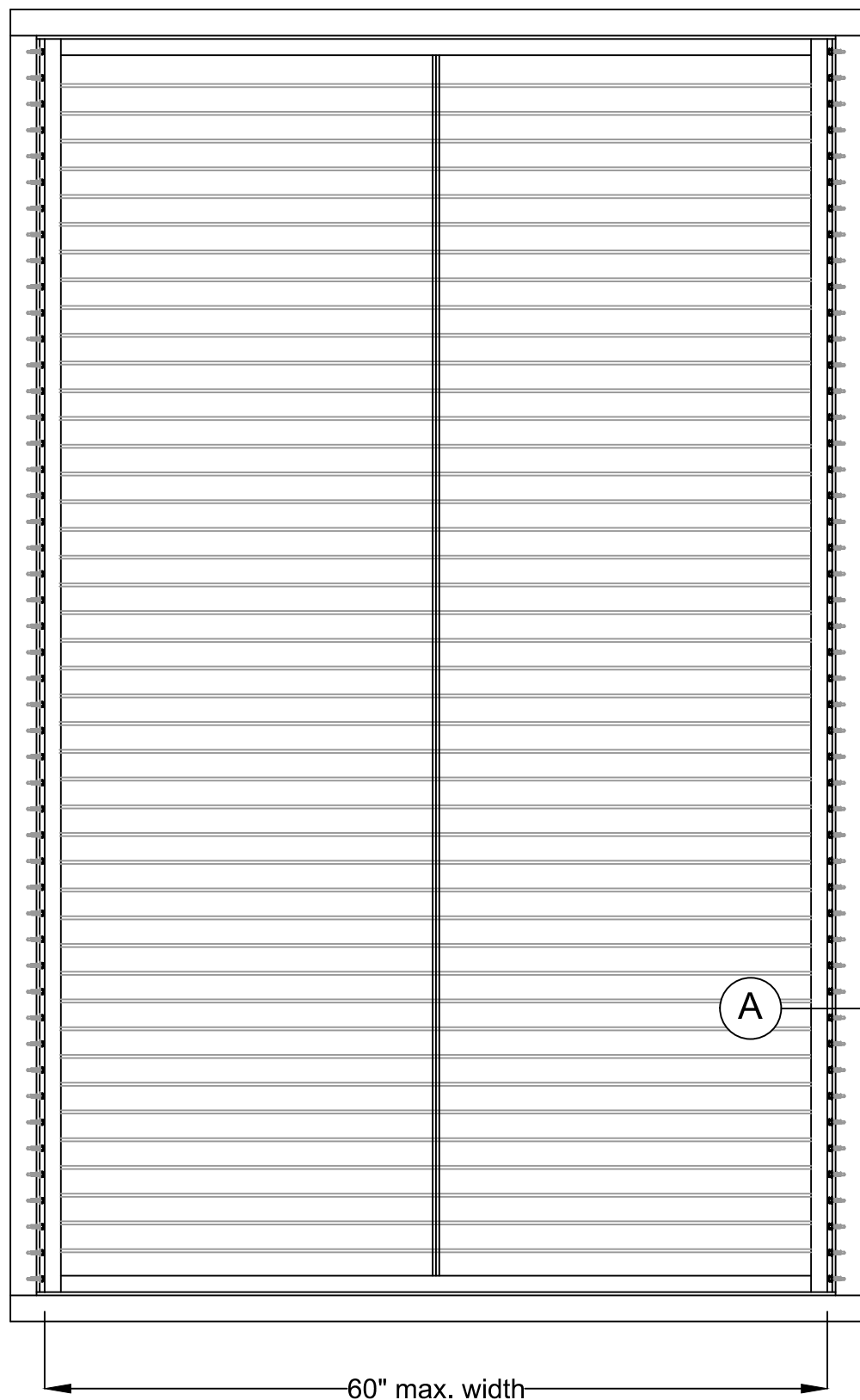
INSTALLATION SCHEDULE 1A						
*Max. PSF	Specification according to substrate (Jamb angle attachment)					
		Concrete (min. 3000 PSI)			Steel (10 ga min.) (Fy=36 ksi)	
+/-300	Ø1/2" Simpson Strong-Tie Titen HD			Ø1/4" Tek Screws		
	Spacing	Min. Embed.	Min. Edge Distance	Spacing	Min. Embed.	Min. Edge Distance
	3" o.c.	5.75"	4"	2" o.c.	N/A	1/2"



Detail "A"
jamb angle
installation



Detail "A"
Alternate
jamb angle
installation



Notes:

FEMA-5
(Standard Attachments)

Date: 8-26-20 (rev.6)

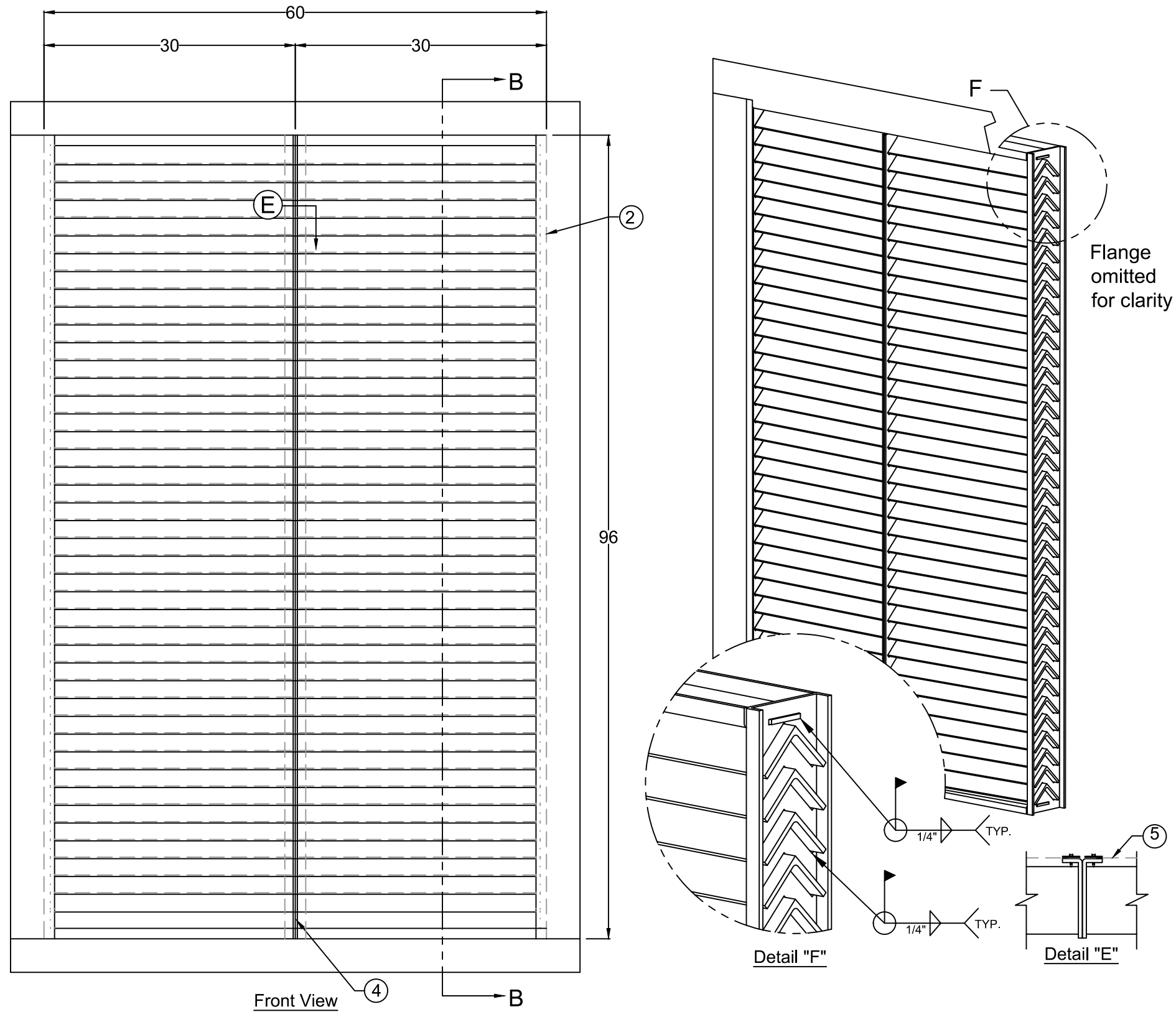
Dwg. FEMA5-0017

Approved By:

Drawn By: C. Jackson

pg. 5 of 9





FEMA-5 Flanged Frame sizing criteria		
Max. Section width	Jamb depth	Design wind load (max psf)
60"	5.5"	+/- 300

Max. Section size 60"w x 96" h
(no multi-section for flanged frame configuration)

Notes:

FEMA-5
Flanged Frame Elevation

Date: 8-26-20 (rev.6)

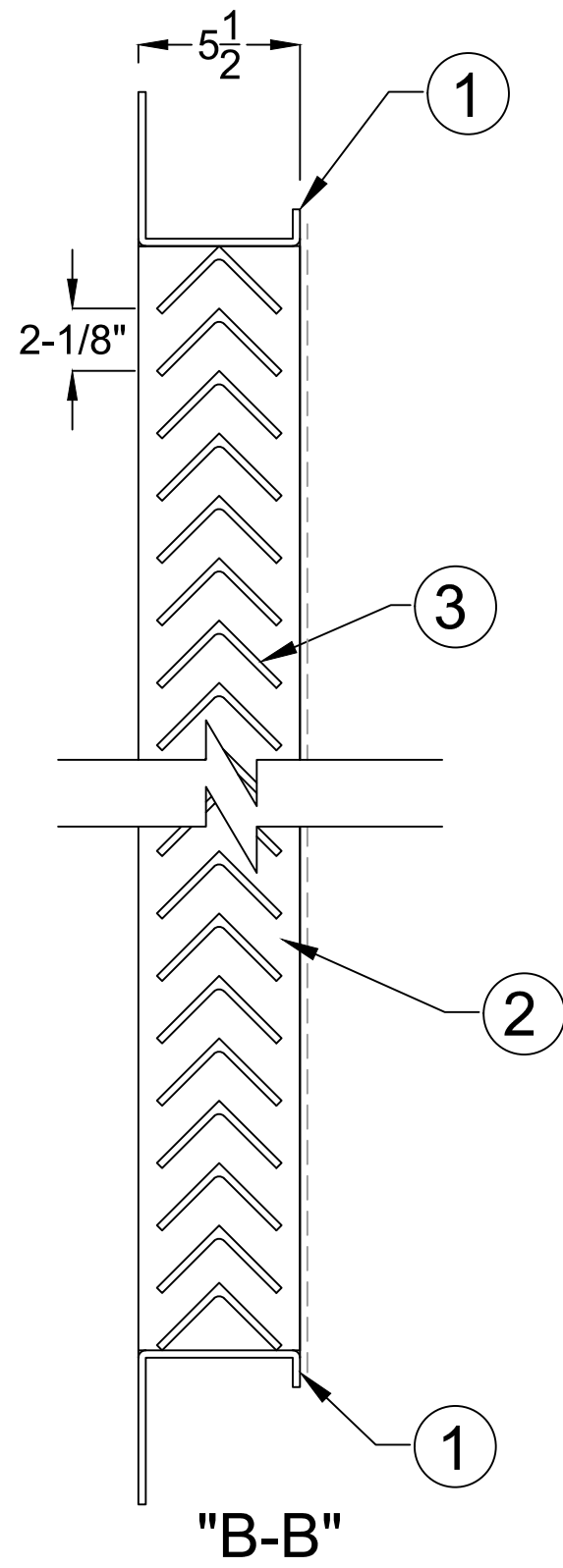
Dwg. FEMA5-0017

Approved By:

Drawn By: C. Jackson

pg. 6 of 9



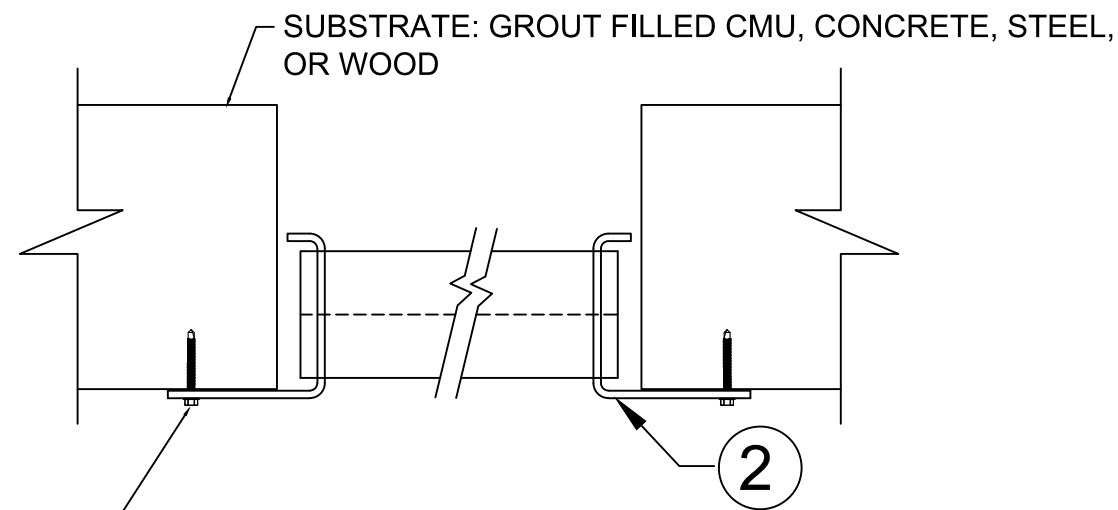


INSTALLATION SCHEDULE 3 (thru perimeter flange)

*Max. Design PSF	Substrate Type	Anchor/Fastener Type	Min Edge Distance	Min. Embedment	Spacing (oc)
+/- 300 PSF	Concrete (Min. 3000 psi)	3/8" Simpson Strong-Tie Titen HD screw anchor	2.50 Inches	2.75 Inches	4 Inch
	CMU (Grout Filled, min. 1500 psi)	1/2" Simpson Strong-Tie Titen HD screw anchor	3.25 Inches	5.75 Inches	4 Inch
	Steel (min. Fy 36,000 psi)	3/8" Bolt	1.0 Inches	0.25 Inches	12 Inch
	Wood (G=.055 density)	Ø1/4" Lag screws	2.0 Inches	2.5 Inches	3 Inch

All fasteners are placed 3" min. from ends of louver

*Note: Proof load in ASTM E330 test will be +/- 360 psf



See Schedule 3

FLANGE MOUNT INSTALLATION

Notes:

FEMA-5
(Flanged Frame Attachments)

Date: 8-26-20 (rev.6)

Dwg. FEMA5-0017

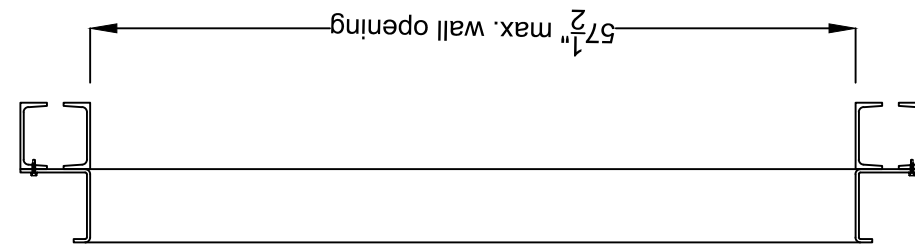
Approved By:

Drawn By: C. Jackson

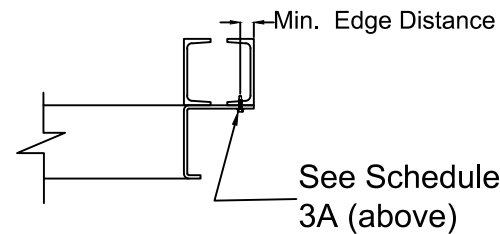
pg. 7 of 9



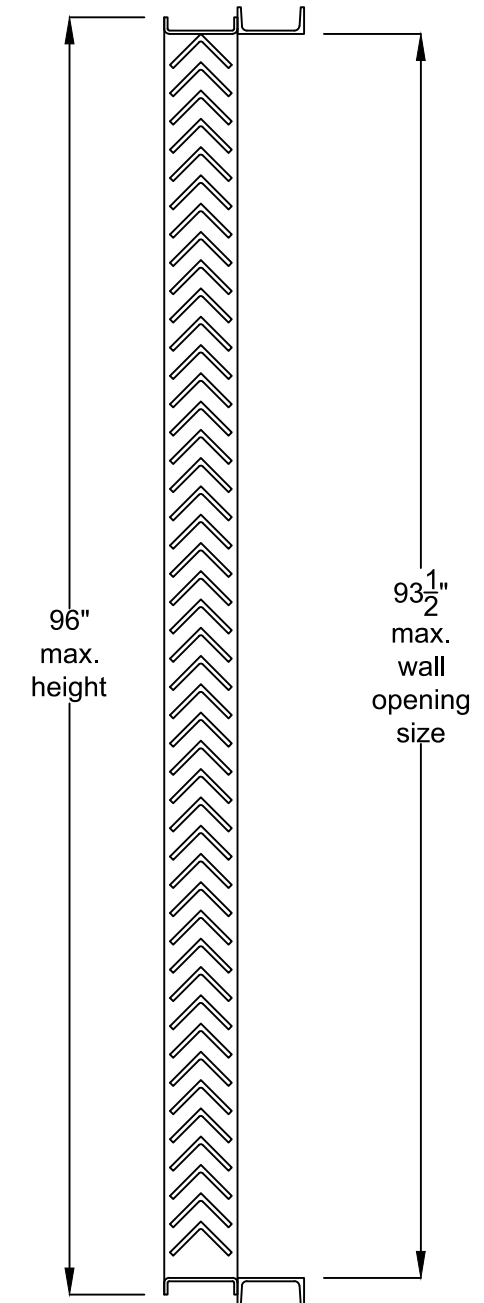
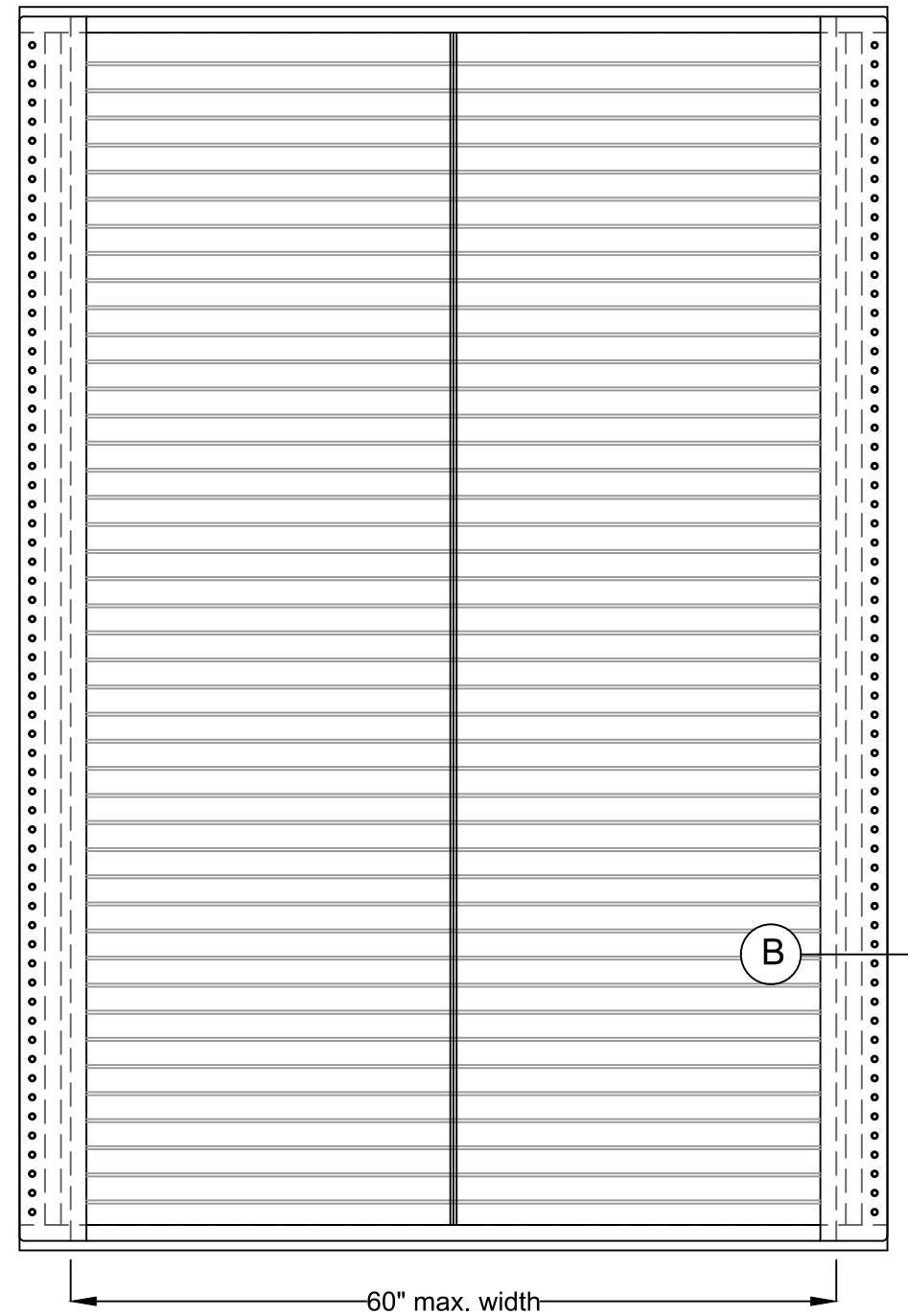
FEMA-5 External Mount with Jamb Flanges Installation method



INSTALLATION SCHEDULE 3A						
*Max. PSF	Specification according to substrate (Rear jamb flange attachment)					
	Concrete (min. 3000 PSI)			Steel (10 ga min.) (Fy=36 ksi)		
+/-300	Ø1/2" Simpson Strong-Tie Titen HD			Ø1/4" Tek Screws		
	Spacing	Min. Embed.	Min. Edge Distance	Spacing	Min. Embed.	Min. Edge Distance
	3" o.c.	5.75"	4"	1.5" o.c.	N/A	1"



Detail "B"
rear flange
installation



Notes: FEMA-5
(Flanged Frame Attachments)

Date: 8-26-20 (rev.6)

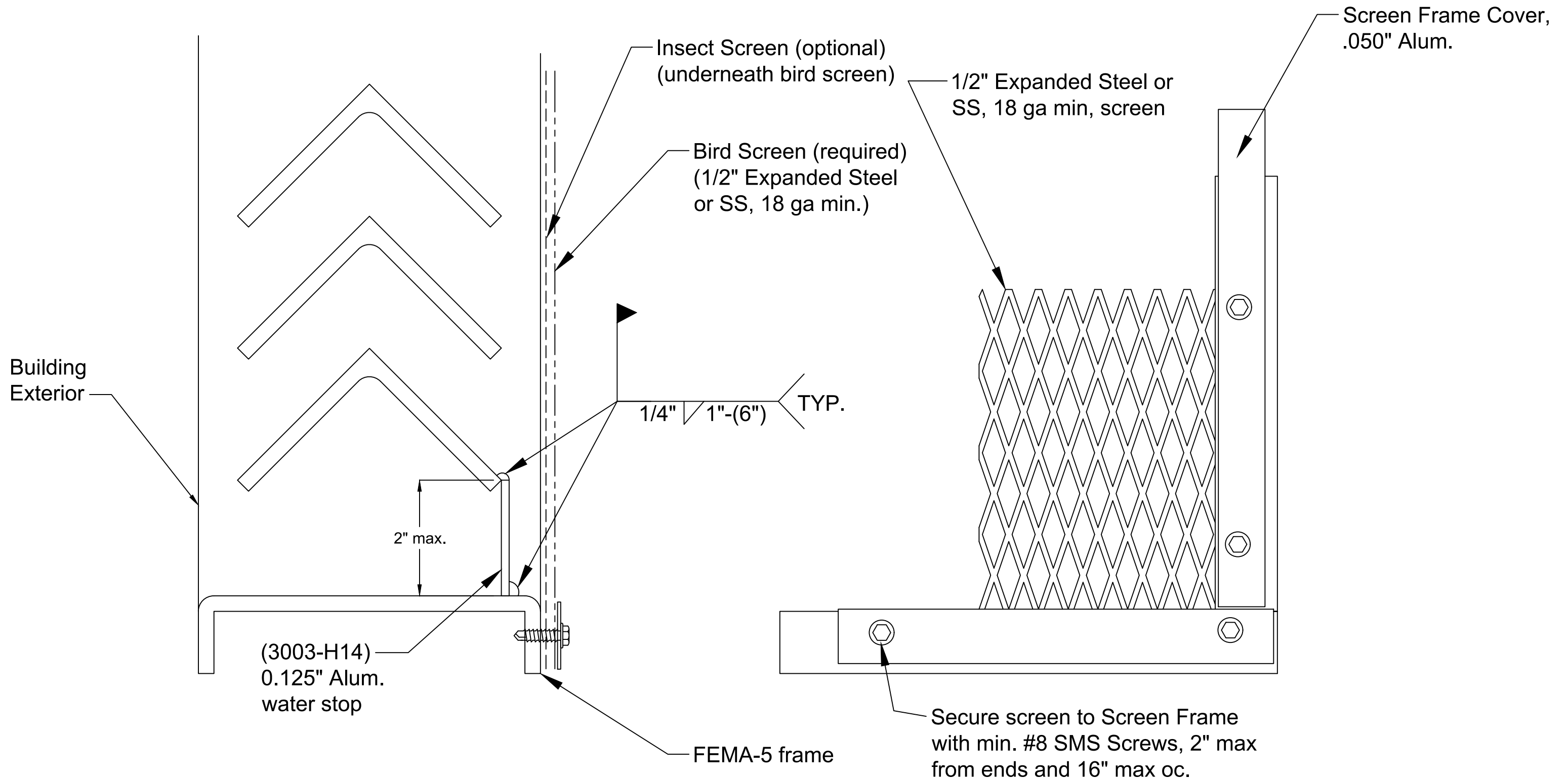
Dwg. FEMA5-0017

Approved By:

Drawn By: C. Jackson

pg. 8 of 9





Notes:

FEMA-5
Misc. details

Date: 8-26-20 (rev.6)

Dwg. FEMA5-0017

Approved By:

Drawn By: C. Jackson

pg. 9 of 9

